

VERSACLIPPER 4000™

MULTI-HEAD CLIPPING MACHINE



Want to increase your productivity dramatically?

If the answer is yes, you need the new VersaClipper 4000 Multi-Head Clipping Machine from Vertex Fasteners. The VersaClipper 4000 can be set up with up to six clipping heads on the standard model, or we can custom build a machine with up to 16 clipping heads to tackle any of your specific clipping needs.

Since the VersaClipper 4000 fires all clipping heads simultaneously, this means that you can clip the entire rail in half a second! The clipping heads move from side to side, in and out, and swivel to accommodate different clipping patterns, including curved rails. And when you're ready for more, clip loading is a breeze with a convenient roll of 1,500 clips to feed each head.

You won't find any other machine like the VersaClipper 4000 on the market. Design, durability, productivity, and unmatched customer service and support make the VersaClipper 4000 the perfect choice for your clipping needs.

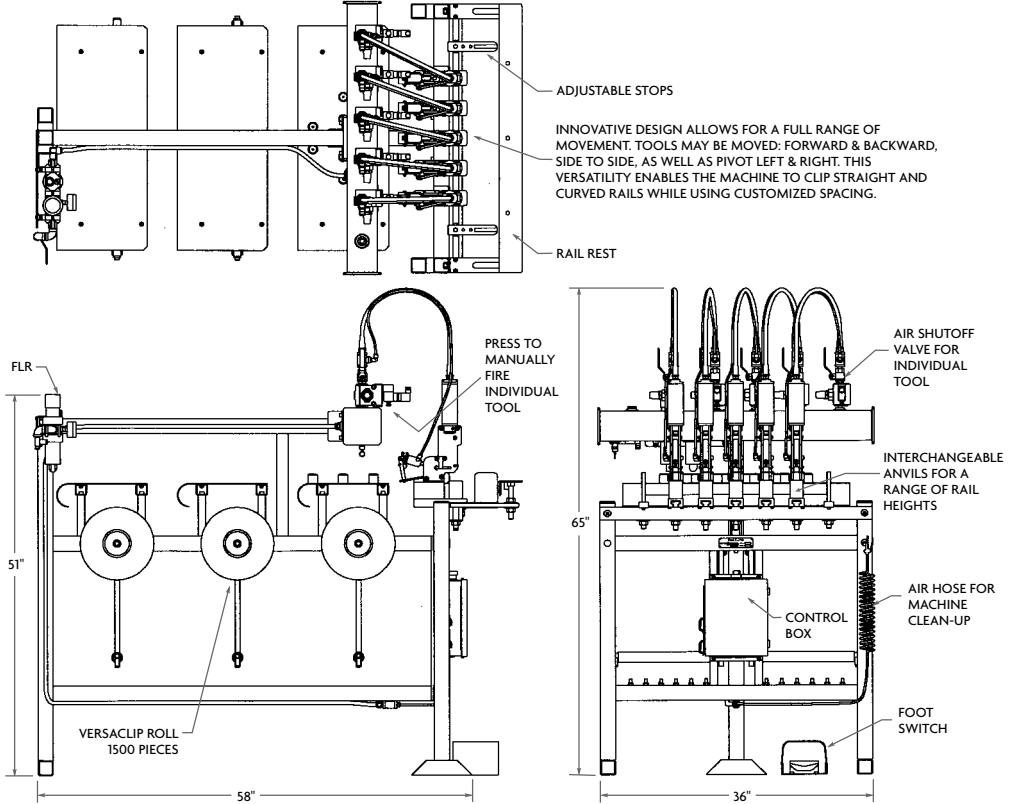
VERSACLIPPER 4000™

MULTI-HEAD CLIPPING MACHINE

SPECIFICATIONS

TOP AND FRONT VIEWS

SIDE VIEW



CLIP SPECIFICATIONS
 Part Number: RV-1
 Roll Qty: 1,500 clips
 Pallet Qty: 96,000 clips

CLIP DELIVERY
 Machines available with 5 to 16 clipping heads and offer a range of 6,000 to 10,000 clips per hour

AIR PRESSURE
 50–70 psi (3.4–4.8 bar)

FLOOR SPACE REQUIRED (BASIC 5-HEAD MODEL)
 3' x 4'10"
 (.91m x 1.48m)

The 4000 series uses the all steel VersaClip™ featuring Vertex's patented polycord collation technology, high profile upturned edge and extended polypropylene liner. Its all-in-one design works for both back and seat rails.



VersaClips™ covered by Patent No. 5,833,064.

VersaClipper™ is covered by one or more of the following patents: 5,303,821; 5,833,064; 6,055,716.

Outstanding Features to Fit Your Needs

Installs multiple clips at one time. Installs 1 to 16 clips in half a second, saves time, increases productivity.

Push, fire, stack design. Any operator can clip fast and produce quality results.

Movable clipping heads. Easy changeover for different clip spacing and locations.

Clipping heads are able to swivel. Allows the easy clipping of curved back posts.

Individual clipping head air shut-off valves. Can clip sofa, love seat, and chair rails with minimal adjustment.

Easy clip loading. Saves time, increases productivity.

Convenient 1,500 clip rolls. Less loading, easy storage.

Service and technical support. Vertex Fasteners is committed to providing our customers with world-class customer service and support. Our dedicated regional sales/service technicians are Vertex employees. They know the product, the business, and their customers, and are there to serve you. Vertex also has a well-trained staff of customer service, production, and engineering professionals that are ready and able to assist you.

VERTEX FASTENERS INC.

A SUBSIDIARY OF *Leggett & Platt*

3714 JARVIS AVENUE, SKOKIE, IL 60076 U.S.A.
 EMAIL: VERTEX@LEGGETT.COM
 PHONE: 847-329-8530 FAX: 847-329-8529