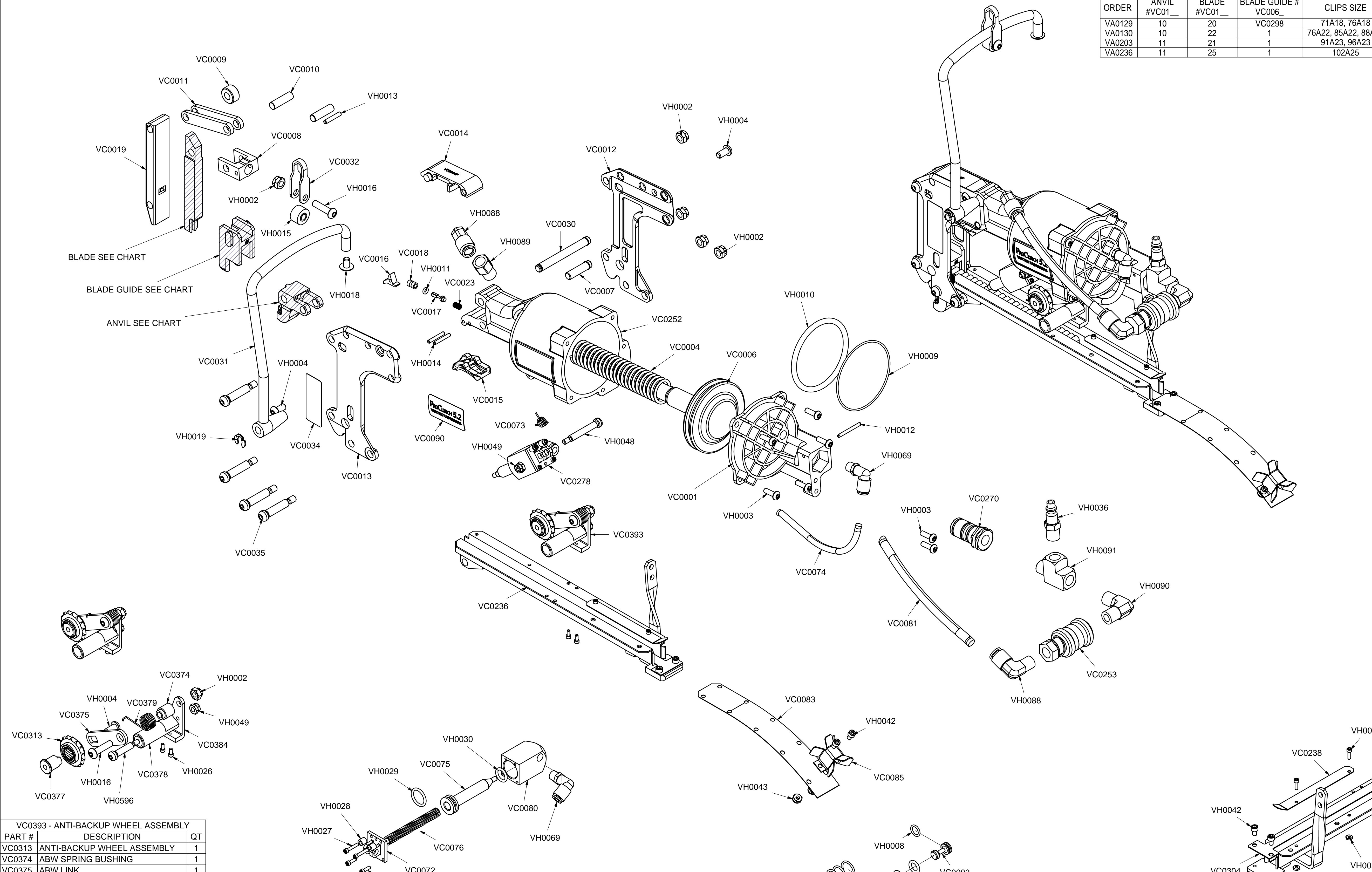


TOOL CHART				
ORDER	ANVIL #VC01_	BLADE #VC01_	BLADE GUIDE # VC006_	CLIPS SIZE
VA0129	10	20	VC0298	71A18, 76A18
VA0130	10	22	1	76A22, 85A22, 88A22
VA0203	11	21	1	91A23, 96A23
VA0236	11	25	1	102A25

PART #	DESCRIPTION	QT
VC0001	CAP	1
VC0004	SPRING, PISTON	1
VC0006	PISTON ASSEMBLY	1
VC0007	PIN	1
VC0008	YOKE	1
VC0009	ROLLER	1
VC0010	LINK PIN	2
VC0011	LINK	2
VC0012	RIGHT-SIDE PLATE	1
VC0013	LEFT-SIDE PLATE	1
VC0014	TOP PLATE	1
VC0015	TRIGGER	1
VC0016	PILOT VALVE LEVER	1
VC0017	PILOT VALVE PISTON	1
VC0018	PILOT VALVE SLEEVE	1
VC0019	FRONT PLATE	1
VC0023	SPRING, TRIGGER VALVE	1
VC0030	PIN	1
VC0031	HANGER	1
VC0032	HANGER YOKE	1
VC0034	WARNING LABEL	1
VC0035	SHOULDER BOLT	4
VC0073	TORSION SPRING	1
VC0074	POLYETH BLK TUBE, 1/4 x 8 1/4	1
VC0081	NYLON HOSE, 3/8 OD x 7.75	1
VC0083	TRACK 'A'	1
VC0085	TRACK GUIDE 'A'	1
VC0090	PROCLINCH 5.2 LABEL	1
VC0236	MAGAZINE ASSEMBLY (A)	1
VC0252	BODY	1
VC0253	SLIDE VALVE	1
VC0270	MAIN VALVE BODY W/ O-RINGS	1
VC0278	FEED CYLINDER ASSEMBLY	1
VC0393	ANTI-BACKUP WHEEL ASSEMBLY	1
VC0_	ANVIL #	1
VC0_	BLADE #	1
VC0_	BLADE GUIDE #	1
VH0002	NUT, FLEX, 1/4 - 20	5
VH0003	SHCS, 10 - 14 x 5/8 PLASTITE	7
VH0004	BHCS, 1/4 - 20 x 1/2	2
VH0009	O-RING, #040	-
VH0010	O-RING, #335	-
VH0011	O-RING, TRIGGER	1
VH0012	PIN, ROLL, 1/8 x 1 1/4	1
VH0013	PIN, DOWEL	1
VH0014	PIN, DOWEL, 1/8 x 7/8	2
VH0015	BEARING, HANGER	1
VH0016	BHCS, 1/4 - 20 x 1	1
VH0018	FLANGE HEAD SCREW, 1/4 - 20 x 3/8	1
VH0019	RETAINING RING	1
VH0036	PLUG, MALE, 1/4 - 1/4	1
VH0042	NUT, NYLOCK, 8 - 32	2
VH0048	SHOULDER BOLT, 1/4 x 1 1/2	1
VH0049	NUT, FLEX, 10 - 24	1
VH0069	PUSH-IN FTG, 90 1/4 OD x 1/8 NPT	1
VH0088	ELBOW, 3/8 x 1/4 NPT	2
VH0089	ADAPTER, 1/4 x 1/4	1
VH0090	ELBOW, MALE, 1/4 NPT	1
VH0091	TEE, STREET, 1/4 NPT	1



PART #	DESCRIPTION	QT
VC0393	ANTI-BACKUP WHEEL ASSEMBLY	1
VC0313	ANTI-BACKUP WHEEL ASSEMBLY	1
VC0374	ABW SPRING BUSHING	1
VC0375	ABW LINK	1
VC0377	ABW BUSHING	1
VC0378	ABW FLAG KNOB	1
VC0379	ABW SPRING	1
VC0384	ABW MAGAZINE BRACKET - PC5	1
VH0002	NUT, FLEX, 1/4 - 20	1
VH0004	BHCS, 1/4 - 20 x 1/2	1
VH0016	BHCS, 1/4 - 20 x 1	1
VH0026	SHCS, 4 - 40 x 1/4	2
VH0049	NUT, FLEX, 10 - 24	1
VH0596	SHOULDER BOLT, 1/4 x 1	1

PART #	DESCRIPTION	QT
VC0072	CYLINDER END CAP	1
VC0075	PISTON (CLIP FEEDER)	1
VC0076	PISTON FEED SPRING	1
VC0080	CYLINDER BODY (CLIP FEEDER)	1
VH0024	SHCS 4 - 40 x 3/8	2
VH0027	SHCS, 4 - 40 x 5/8	2
VH0028	SPACER, 1/4 OD x 1/8 ID x 1/4	2
VH0029	O-RING, 5/8 x 13/16	1
VH0030	O-RING, 7/16 x 5/8	1
VH0069	PUSH-IN FTG, 90 1/4 OD x 1/8 NPT	1

PART #	DESCRIPTION	QT
VC0002	MAIN VALVE BODY	1
VC0003	VALVE PISTON	1
VH0005	O-RING, #016	3
VH0006	O-RING, #109	1
VH0007	O-RING, #110	1
VH0008	O-RING, VALVE PISTON	1

PART #	DESCRIPTION	QT
R40236	WELDED MAGAZINE ASSEMBLY ('A')	1
VC0238	MAGAZINE COVER 'A' SIZE FOR PC5	1
VC0304	MAGAZINE LINER 'A'	1
VH0024	SHCS 4 - 40 x 3/8	2
VH0025	LOCK NUT 4 - 40	2
VH0042	SHCS 8 - 32 x 1/4	2

REV	ECN	DESCRIPTION	BY	APPD	DATE	MATERIAL:
F		SIDE PLATES SHORTENED	JMW		8-30-00	
G		CAP # CHANGE	JMW		1-30-01	HEAT TREATMENT:
H	657		JMW	DA	3-30-06	
J		INVENTOR FORMAT	JMW	DA	8-30-07	FINISH:
K	816	REMOVE ITEM FROM TOOL CHART	JMW	DA	9-11-07	

INCHES X=0.000 XX=0.005 XXX=0.005 ANGLES 1/2	© 2007 DWN BY JMW APPD DATE SCALE DWG. NO. VC2014	VERTEX FASTENERS 3714 JARVIS AVENUE SKOKIE, IL 60076 U.S.A.  PROCLINCH 5.2 (A' CLIPS)	D
--	--	--	---

THIS DOCUMENT AND THE DATA DISCLOSED HEREIN OR HEREWITH IS NOT TO BE REPRODUCED, USED, OR DISCLOSED IN WHOLE OR IN PART TO ANYONE WITHOUT THE PERMISSION OF VERTEX FASTENERS.